

The Urban Series

22' Wide Homes



Standard Specifications

Standard Construction

- ⇒ 30 Year Architectural Fiberglass Shingles
- ⇒ Engineered Roof Trusses
- ⇒ 12" Residential Eaves on 4 Sides
- ⇒ Low Maintenance Vinyl Siding
- ⇒ 8' Walls
- ⇒ 2 x 6 @ 24" O.C. Outside Walls
- ⇒ 3/8" OSB Sheathing on Inside and Outside of Exterior Walls
- ⇒ 8" or 12" Tubular Laminated Steel Frame
(depends on length)
- ⇒ I-Joist Floor
- ⇒ Weatherproof Exterior GFI Receptacle
- ⇒ Frost Free Tap c/w Check Valve
- ⇒ Coach Lights At All Exterior Doors
- ⇒ Coloured Metal Fascia (Your Choice of Colour)
- ⇒ T&G OSB Floor Decking; Glued And Screwed
- ⇒ R-40 Ceiling, R-20 Wall, R-26 Floor Insulation
- ⇒ 6 MIL Poly Vapour Barrier in Ceiling and Sidewalls
- ⇒ Spraytexed 1/2" Gyproc Ceilings
- ⇒ Cathedral Ceiling in Kitchen, Dining Room and Living Room
- ⇒ 36" Insulated No Light Front Door c/w Peephole
- ⇒ 32" Insulated No Light Rear Door c/w Peephole
- ⇒ Aluminum Storm Doors
- ⇒ White PVC "Low E" Windows With Screen

Kitchen

- ⇒ 18 CU. FT. Two Door Fridge - Top Freezer - Stainless
- ⇒ 30" Electric Range - Stainless Steel
- ⇒ Dishwasher - Stainless Steel
- ⇒ Double Stainless Steel Sink
- ⇒ Single Lever Faucet
- ⇒ Two Speed Range Hood Vented to Exterior
- ⇒ Bank of Drawers
- ⇒ Roller Drawer Hardware

Bath

- ⇒ GFI Receptacles
- ⇒ Dehumidistat on Main Bath Fan
- ⇒ One Piece Wall Tub/Shower In Main Bath
- ⇒ Oval tub and separate 36" Shower in Ensuite
- ⇒ Single Lever Faucet
- ⇒ White Bath Fixtures
- ⇒ Shower Rod and Curtain Liner in all Bathrooms
- ⇒ Pewter Towel Bar and Paper Holder
- ⇒ 3" White Subway Tile Backsplash

Interior Finish

- ⇒ 3" White Subway Kitchen Tile Backsplash
- ⇒ PVC wrap cabinet doors
- ⇒ Modular Cabinets
- ⇒ Euro Style Cabinet Pulls T/O
- ⇒ Lever Door Handles T/O
- ⇒ Wire Closet Shelving
- ⇒ 100% Polyurethane Carpet in Living Room and Bedrooms
- ⇒ No Wax Vinyl Flooring
- ⇒ Pewter Interior Door Hardware T/O
- ⇒ Pre-finished White Embossed Interior Doors
- ⇒ Ceiling Trim: 1011 Profile
- ⇒ Baseboards: 1011 Profile
- ⇒ Window/Door Trim: 1011 Profile
- ⇒ Cabinet Crown Moulding: 510 Profile
- ⇒ Closets: Battens throughout
- ⇒ 10.0 MM Laminate Flooring in Kitchen and Dining Room
- ⇒ 2" Blinds T/O
- ⇒ Utility Cabinets Above Washer and Dryer

Utilities

- ⇒ 40 Gl Electric Water Heater
- ⇒ Electric Furnace
- ⇒ 200 Amp Electric Service Panel
- ⇒ Electric Conduit Through Floor
- ⇒ Light Bulb Package
- ⇒ Smoke/CO Alarms w/Battery Back Up In Hallways
- ⇒ Smoke Alarms In All Bedrooms
- ⇒ Shut Off Valves On All Fixtures
- ⇒ Copper Wiring Throughout

Did you know?

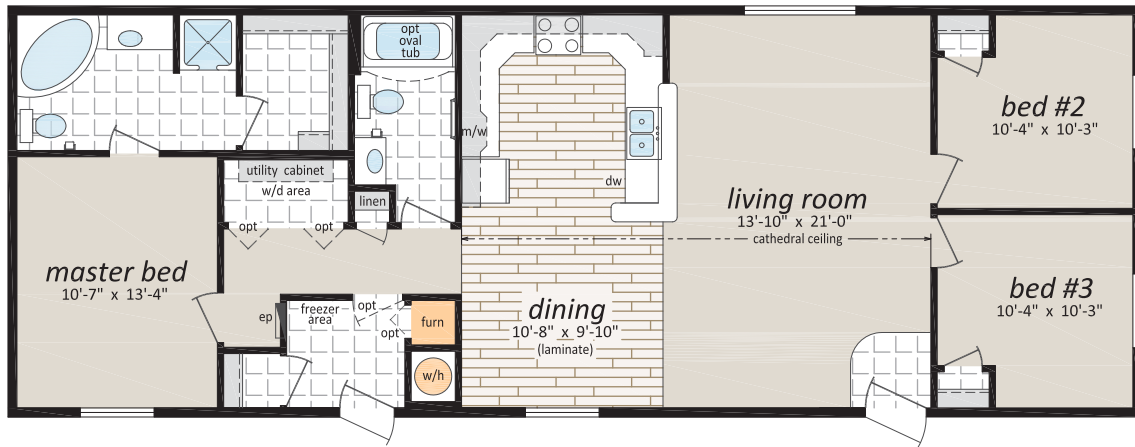
Shelter Home Systems began building homes for Canadians in 1978?



UN-22601

22' x 60' 1,320 sq. ft.

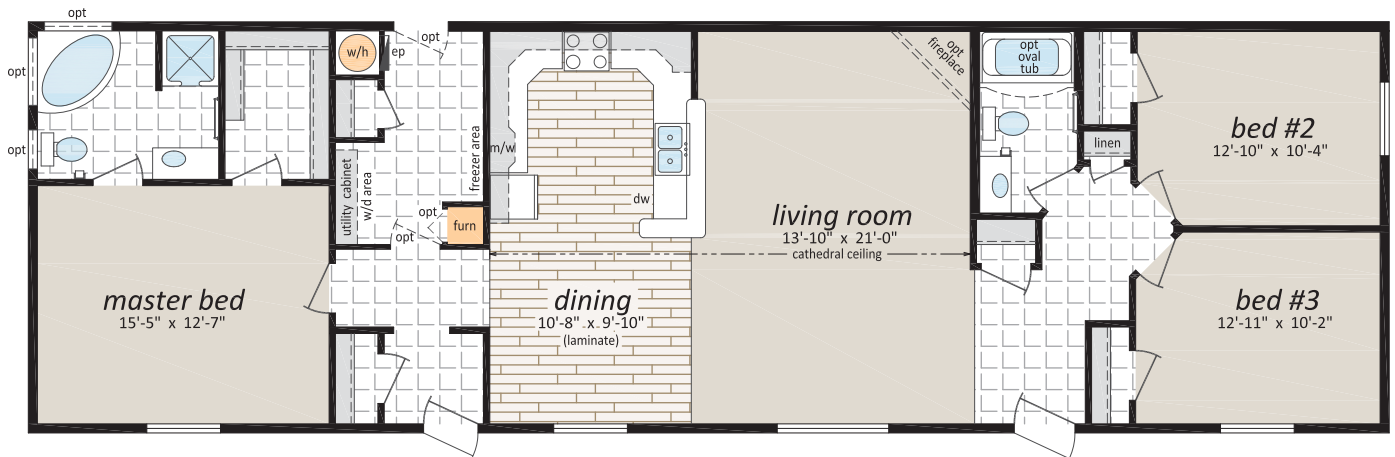
3 Beds, 2 Baths



UN-22721

22' x 72' 1,584 sq. ft.

3 Beds, 2 Baths



UN-22761

22' x 76' 1,672 sq. ft.

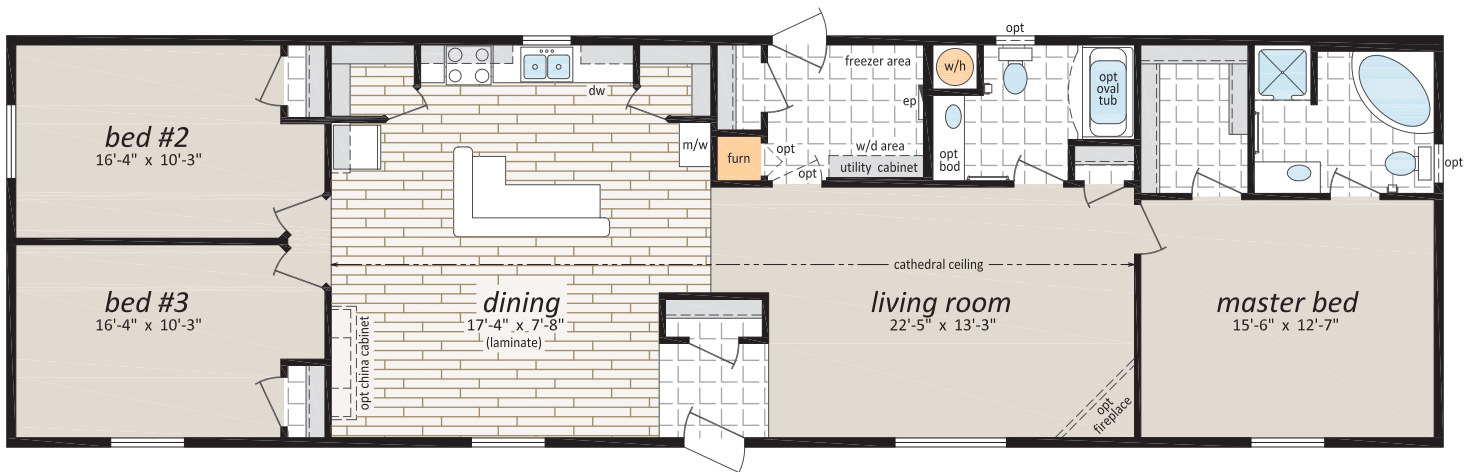
3 Beds, 2 Baths



UN-22762

22' x 76' 1,672 sq. ft.

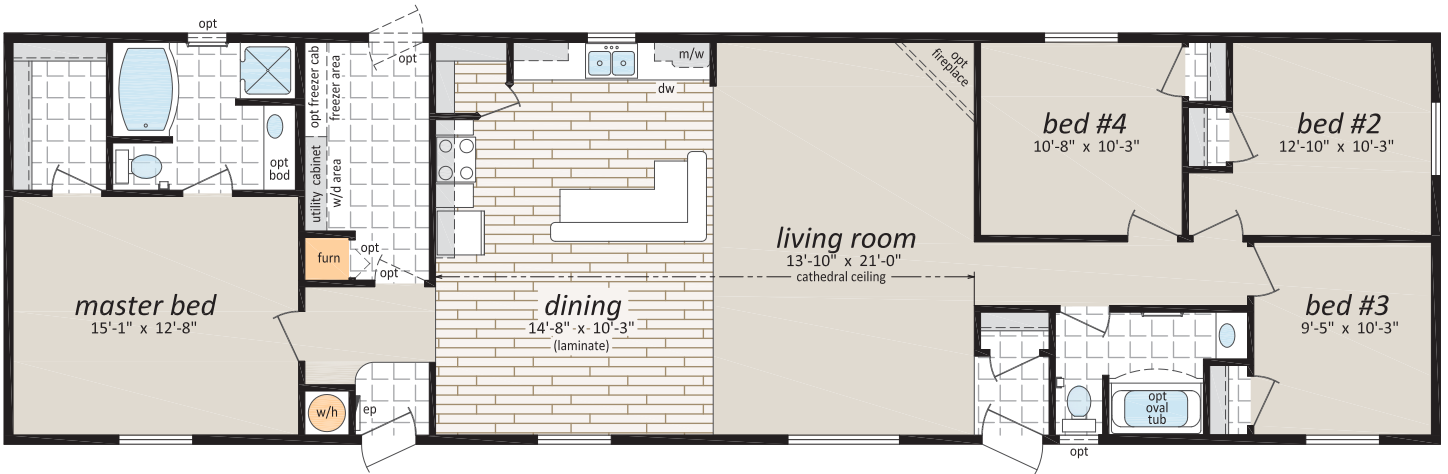
3 Beds, 2 Baths



UN-22763

22' x 76' 1,672 sq. ft.

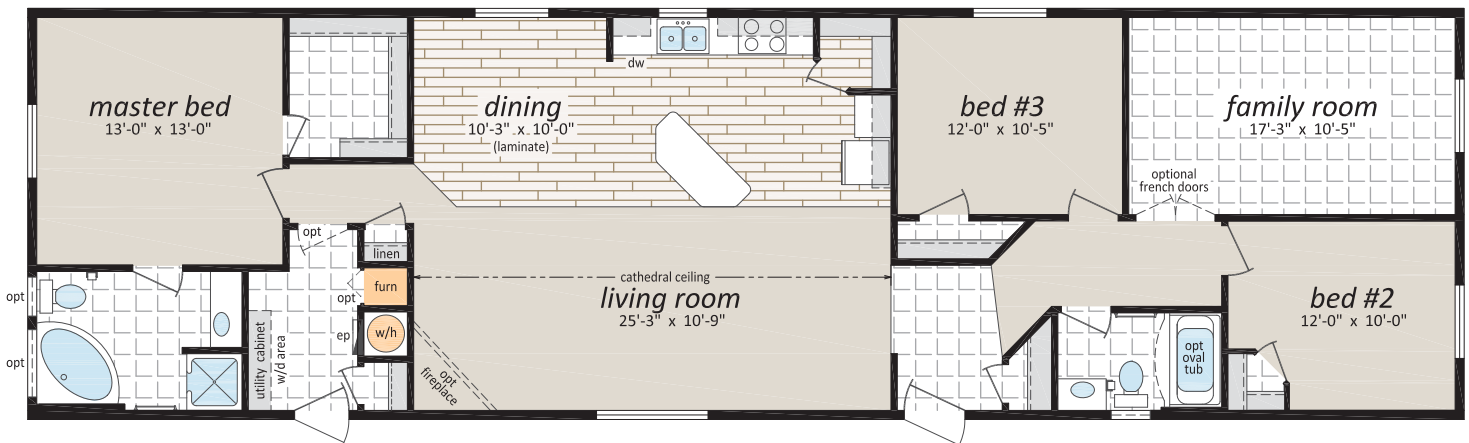
4 Beds, 2 Baths



UN-22764

22' x 76' 1,672 sq. ft.

3 Beds, 2 Baths



Optional Features

Exteriors

- Skylights
- Deluxe Garden Doors
- Patio Doors
- Sunburst Exterior Door
- Polyurethane Stone Accents
- Vinyl Shakes in Gable
- Octagon Windows
- "Aurora" Living Room Windows
- "Vista" Living Room Windows c/w Diamond Cut Ceiling
- "Panorama" Living Room Windows c/w Diamond Cut Ceiling
- "Moon Beam" Living Room Windows c/w Diamond Cut Ceiling
- Sequoia Select Upgrade Vinyl Siding
- Turbine Vents
- Extra Exterior GFI
- High Snow Load

Interiors

- Painted Drywall Throughout Home
- Cathedral Ceiling in Master Bedroom
- Laminate Flooring
- Carpet in 2nd and 3rd Bedrooms
- French Doors
- Mirrored Closet Doors
- Freezer Cabinets
- Utility Room Door c/w Grill
- Ceiling Fan with Lights
- 2 - 4' Ceiling Mount or Recessed Fluorescent Lights
- Decora Switch Package
- Solid Wood Trim
- 2" PVC Blinds
- Programmable Thermostat

Bathroom

- Ceramic Tile Backsplash
- Jetted Oval Tub
- Jetted One Piece Tub and Shower
- 60" Shower c/w Glass Doors
- Handicap Toilet
- Grab Bars

Kitchen

- Raised Panel Solid Wood Cabinet Doors
- European Stainless Steel Rangehood
- Etched Glass Cabinet Doors
- China Cabinets and Hutches
- Under Cabinet Lighting
- Upgrade High Definition Laminate Countertops
- Ceramic Tile Backsplash
- Oak Counter Edging
- Tip Out Soap Tray Below Kitchen Sink
- 3 Bulb Track Light c/w Dimmer Switch
- 24" Fluorescent Light Above Kitchen Sink
- Pot and Pan Drawers
- Combination Microwave and Rangehood

Utilities

- Gas Fireplace complete with Air Circulating Fan
- Gas Water Heater
- Gas Furnace
- Oil Gun Furnace
- Self Cleaning Range
- Two Door Side By Side Refrigerator
- Handi-Hite Bottom Mount Refrigerator
- Washer and Dryer (Standard or Front Loading)
- Stacking Washer and Dryer
- Front Load Washer and Dryer
- Central Vacuum System
- Roughed in for Central Vacuum
- Air Conditioner Ready Furnace
- 2 1/2 Ton Air Conditioner
- Extra Telephone Jacks
- Surge Protector
- Garage Ready Package

Check off your extras ...

... and we will take care of the rest!





The Urban Series

22' Wide Homes





Authorized Retailer:

SHELTER
HOME SYSTEMS

SRI
H O M E S

P.O. Box 845 #200 Hwy 18 West
Estevan, SK S4A 2A7
www.shelterhomes.ca

Follow us:  

This is not a fully detailed specification. SRI Homes reserves the right to change specifications, designs, materials and suppliers without notice and without incurring obligation. Information contained herein is from data available at the time of printing. Photos and renderings may show optional features.
Printed in Canada 2000/6/2018.