

The Mainline Home Series



** Comfortable Lifestyle **

** Affordable Quality **



SHELTER
HOME SYSTEMS

WHY SHELTER?

Shelter Home Systems has been supplying affordable and quality built homes to Canadian families for 40 years.



CHOICES

The Mainline Home series offers so many floor plans to choose from and that is just the beginning. From there you have a multitude of decor options to make your new home your very own.



QUALITY & AFFORDABILITY

A Mainline home is affordable, yet quality built. There are also many optional features that you can add for that special look. Additionally, every Shelter home is covered by a 10 year warranty supplied by Progressive Home Warranty.



NOW START PLANNING. . .

. . . your new home!

The Mainline

Home Series

Model Specifications

STANDARD CONSTRUCTION

- ⇒ 30 Year Architectural Fiberglass Shingles
- ⇒ Engineered Roof Trusses
- ⇒ 12" Residential Eaves on 3 Sides (4 sides on 24' Wide RTM's)
- ⇒ Low Maintenance Vinyl Siding
- ⇒ 2 x 6 @ 24" O.C. Outside 8' Walls
- ⇒ 3/8" OSB Sheathing on Inside and Outside of Exterior Walls
- ⇒ 12" Tubular Laminated Steel Frame
- ⇒ 2 x 10 Floor Joists (16' wide)
- ⇒ I-Joist Floor (20' & 22' wide)
- ⇒ 14" Engineered Open Web Floor (24' RTM)
- ⇒ Weatherproof Exterior GFI Receptacle
- ⇒ Frost Free Tap c/w Check Valve
- ⇒ Coach Lights At All Exterior Doors
- ⇒ White Metal Fascia
- ⇒ T&G OSB Floor Decking; Glued & Screwed
- ⇒ Insulation: R-34 Ceiling, R-20 Wal, R26 Floor
- ⇒ 6 MIL Poly Vapour Barrier in Ceiling & sidewalls
- ⇒ Spraytexed 1/2" Gyproc Ceilings
- ⇒ Copper Wiring Throughout
- ⇒ Cathedral Ceiling in Kitchen, Dining Room and Living Room
- ⇒ 36" Front Door & 32" Rear Door Insulated No Light c/w Peephole
- ⇒ White PVC "Low E" Windows with Screen
- ⇒ Mainline 24' RTM only: Hangered floor on a single LVL rim joist & Double LVL required if going on perimeter piles

KITCHEN

- ⇒ 18 CU. FT. Two Door White Fridge (Top Freezer)
- ⇒ 30" Electric White Range
- ⇒ White Dishwasher
- ⇒ Double Stainless Steel Sink
- ⇒ Single Lever Faucet
- ⇒ Two Speed Range Hood Vented to Exterior
- ⇒ Bank of Drawers Roller Drawer Hardware

BATH

- ⇒ GFI Receptacles
- ⇒ De-humidistat on Main Bath Fan
- ⇒ One Piece Wall Tub/Shower in all Bathrooms
- ⇒ Single Lever Faucets
- ⇒ White Bath Fixtures
- ⇒ Shower Rod and Curtain in all Bathrooms
- ⇒ Pewter Towel Bar and Paper Holder
- ⇒ 3" White Subway Tile Backsplash

UTILITIES

- ⇒ 40 GI Electric Water Heater
- ⇒ Electric Furnace
- ⇒ 200 Amp Electric Service Panel
- ⇒ Electric Conduit Through Floor
- ⇒ Light Bulb Package
- ⇒ Smoke/CO Alarms w/Battery Back Up in Hallways
- ⇒ Smoke Alarms in All Bedrooms

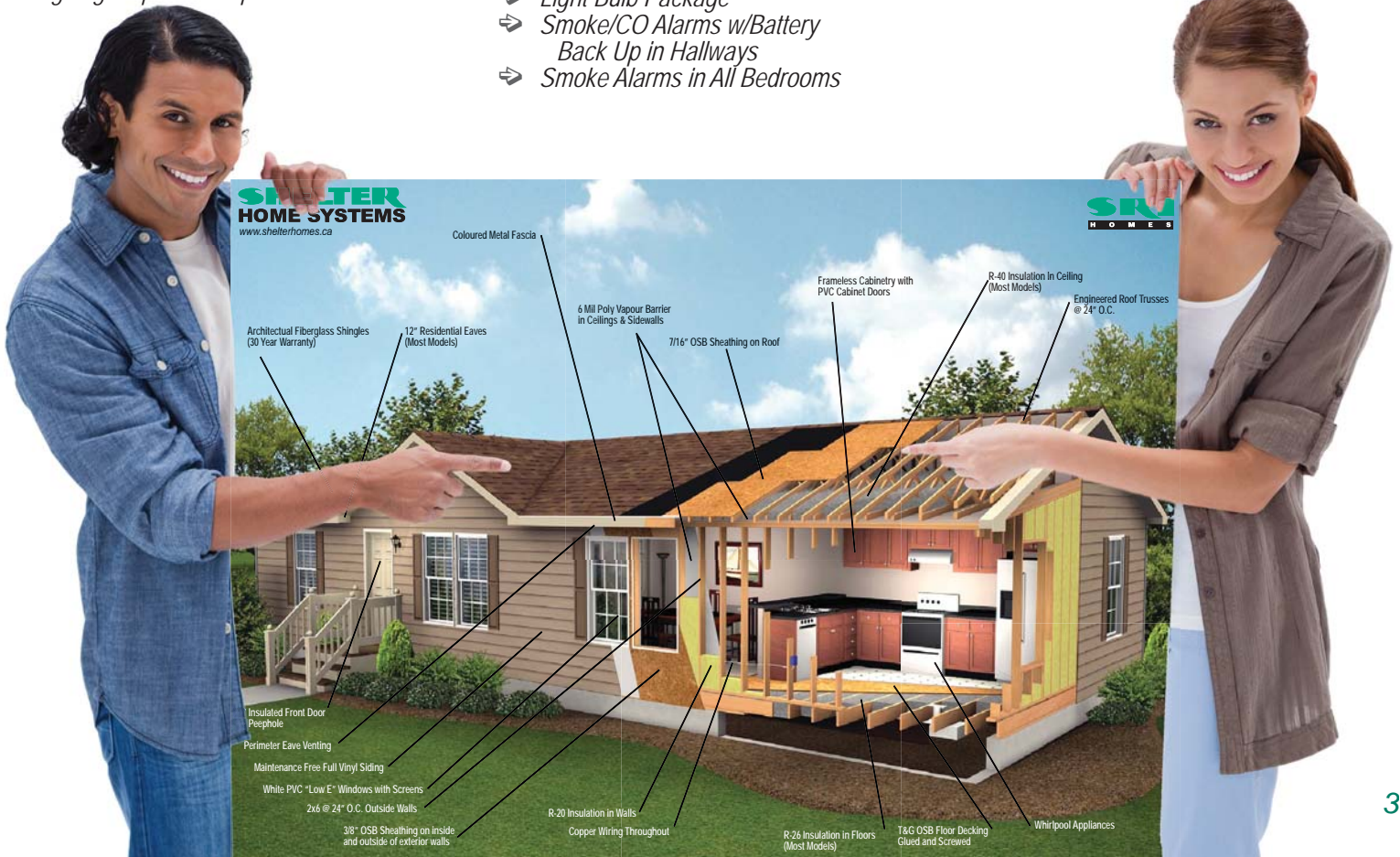
INTERIOR FINISH

- ⇒ 3" White Subway Kitchen Tile Backsplash
- ⇒ PVC Wrap Cabinet Doors
- ⇒ Modular Cabinets
- ⇒ Euro Style Cabinet Pulls Throughout
- ⇒ Lever Door Handles Throughout
- ⇒ Wire Closet Shelving
- ⇒ 100% Polyurethane Carpet in Living Room and Bedrooms
- ⇒ No Wax Vinyl Flooring
- ⇒ Pewter Interior Door Hardware Throughout
- ⇒ Pre-finished White Embossed Interior Doors
- ⇒ Ceiling Trim: 1011 Profile
- ⇒ Baseboards: 1011 Profile
- ⇒ Window/Door Trim: 1011 Profile
- ⇒ Cabinet Crown Moulding: 510 Profile
- ⇒ Closets: Battens Throughout

10 YEAR



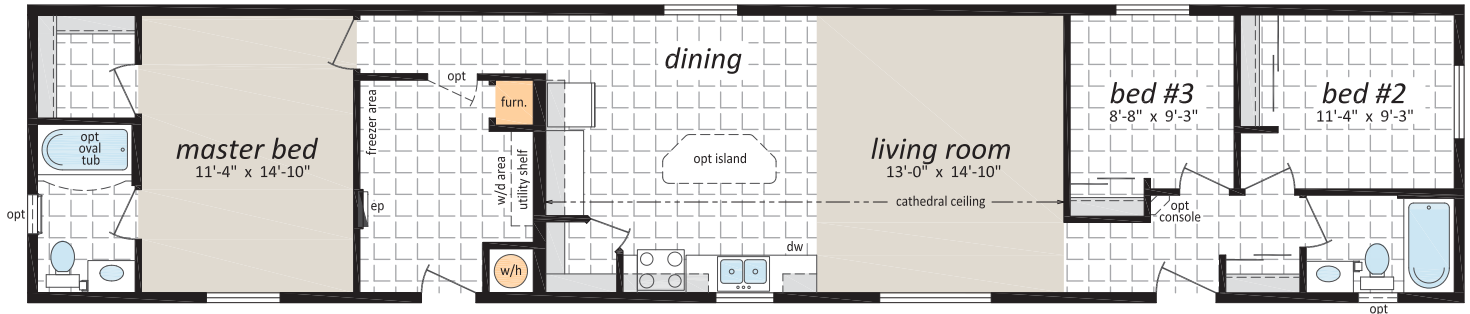
Progressive
HOME WARRANTY



ML-161

16' x 76' 1,216 sq. ft.

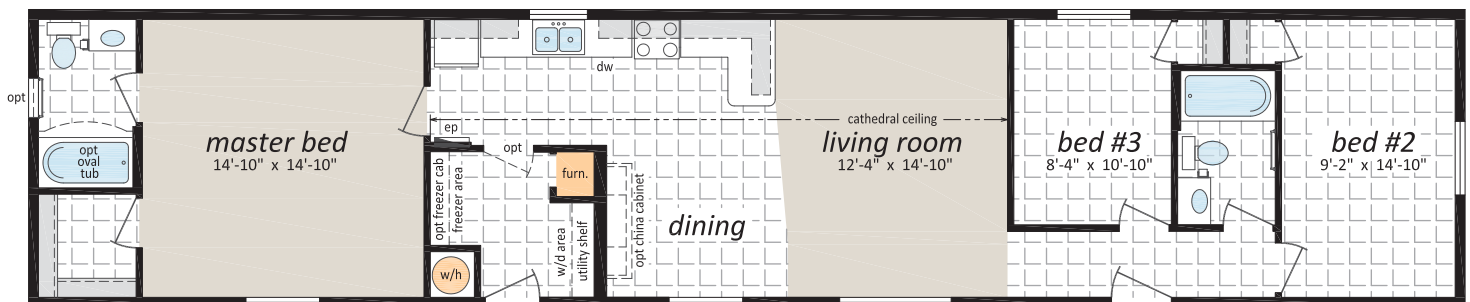
3 Beds, 2 Baths



ML-162

16' x 76' 1,216 sq. ft.

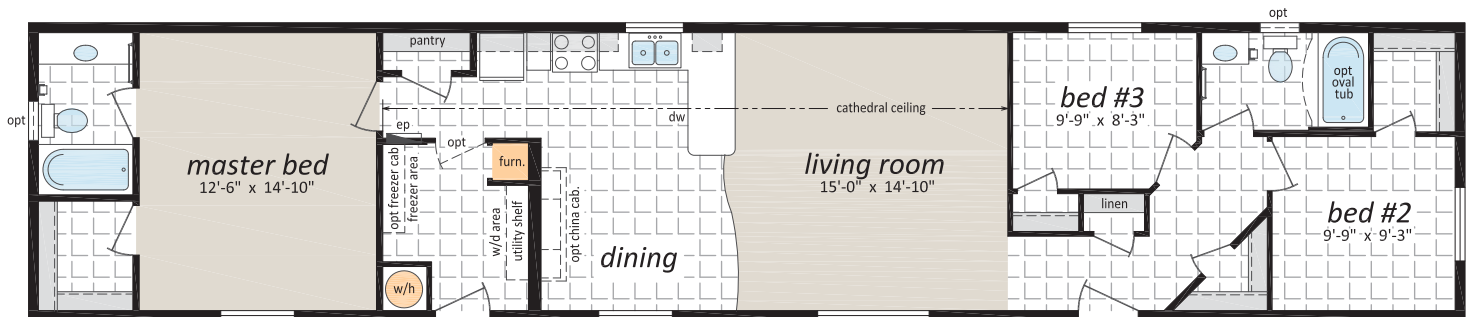
3 Beds, 2 Baths



ML-163

16' x 76' 1,216 sq. ft.

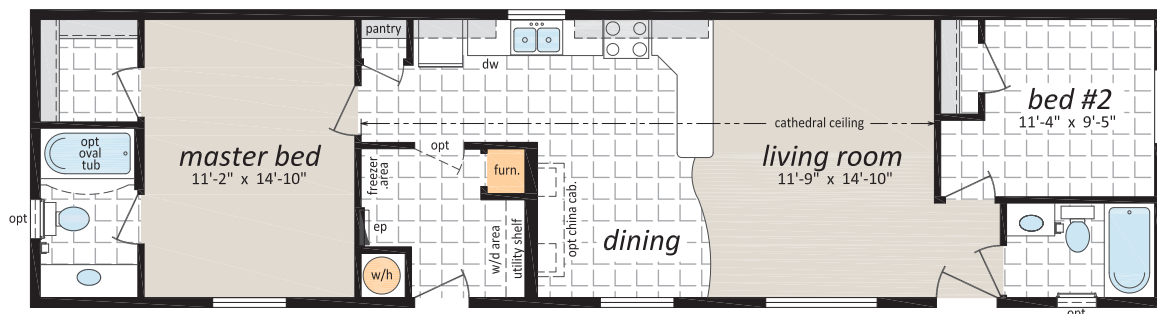
3 Beds, 2 Baths



ML-164

16' x 60' 960 sq. ft.

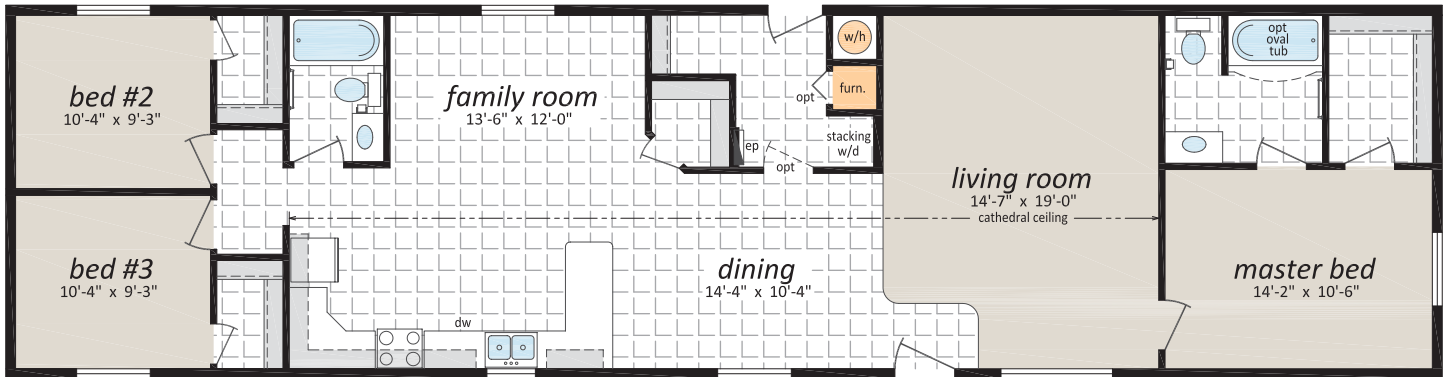
2 Beds, 2 Baths



ML-201

20' x 76' 1,520 sq. ft.

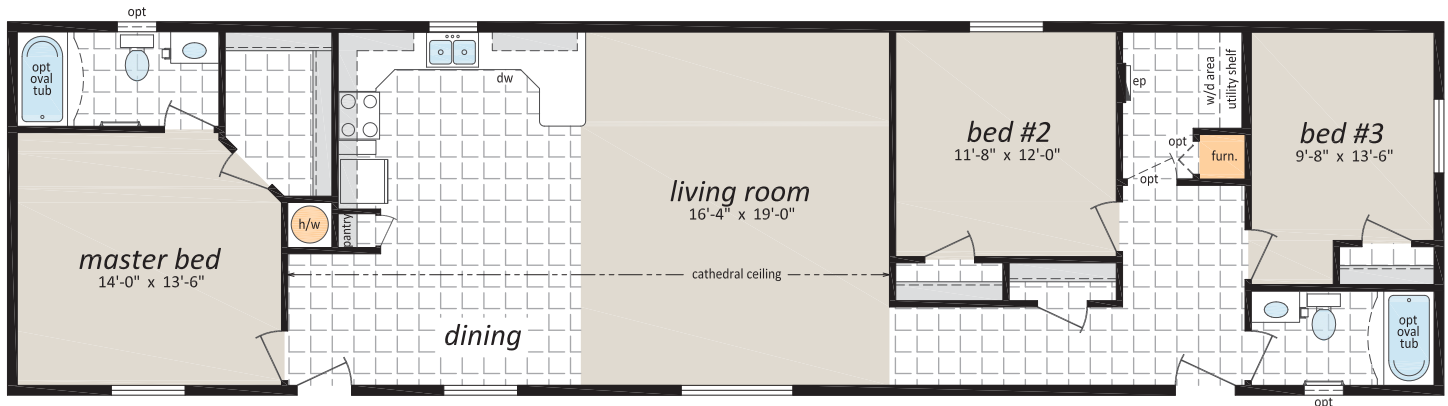
3 Beds, 2 Baths, Family Room



ML-202

20' x 76' 1,520 sq. ft.

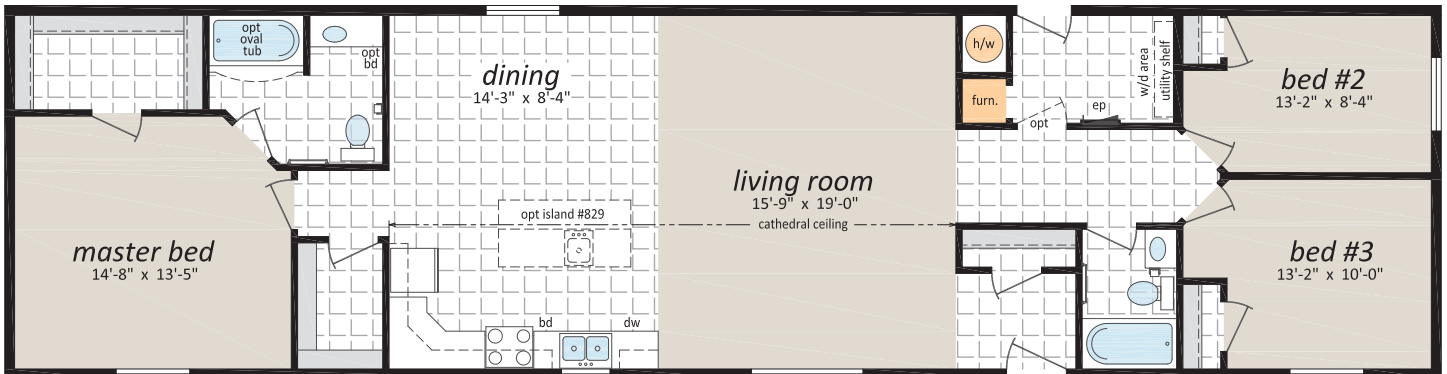
3 Beds, 2 Baths



ML-203

20' x 76' 1,520 sq. ft.

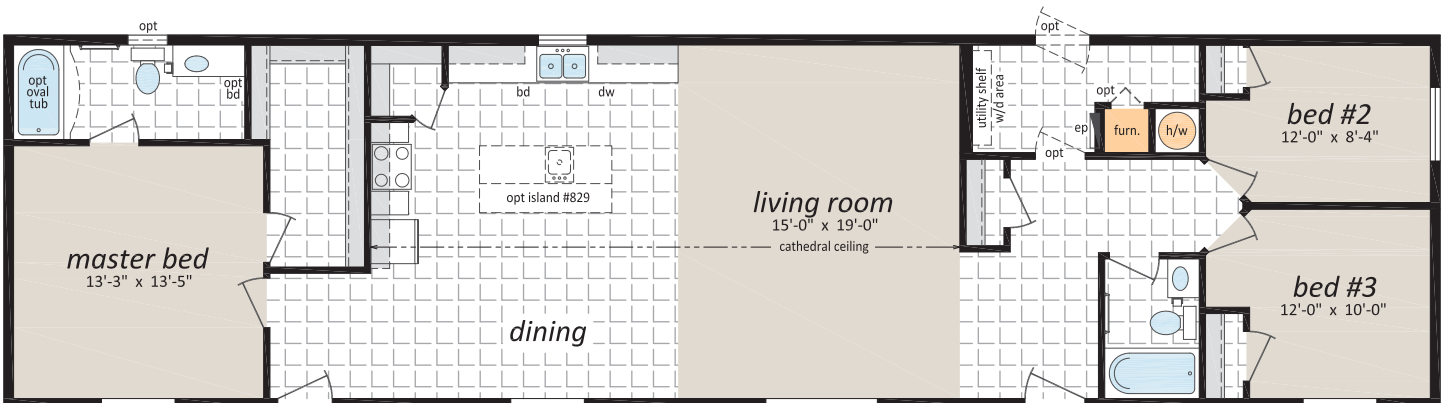
3 Beds, 2 Baths



ML-204

20' x 76' 1,520 sq. ft.

3 Beds, 2 Baths



ML-205

20' x 76' 1,520 sq. ft.

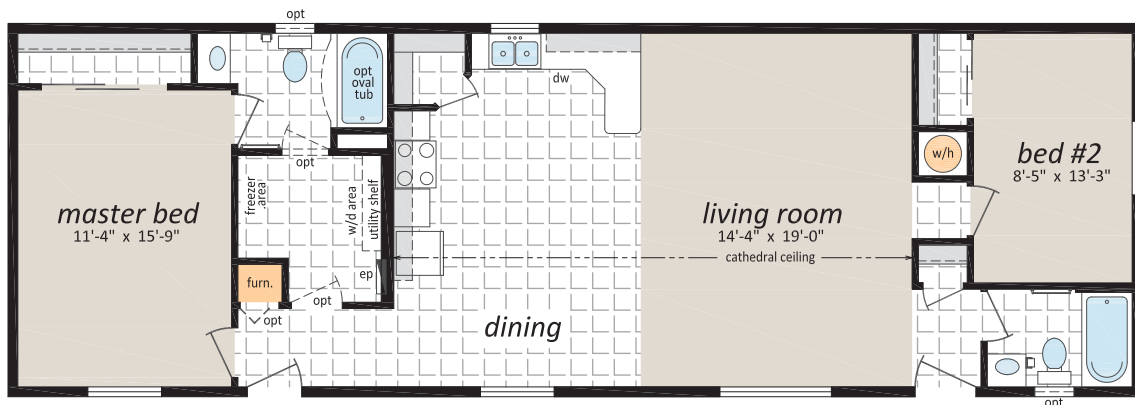
3 Beds, 2 Baths



ML-206

20' x 60' 1,200 sq. ft.

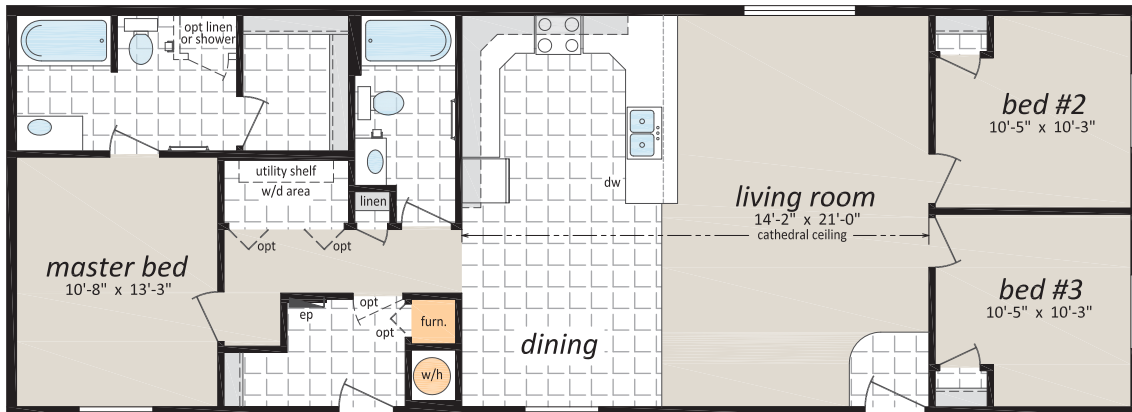
2 Beds, 2 Baths



ML-1

22' x 60' 1,320 sq. ft.

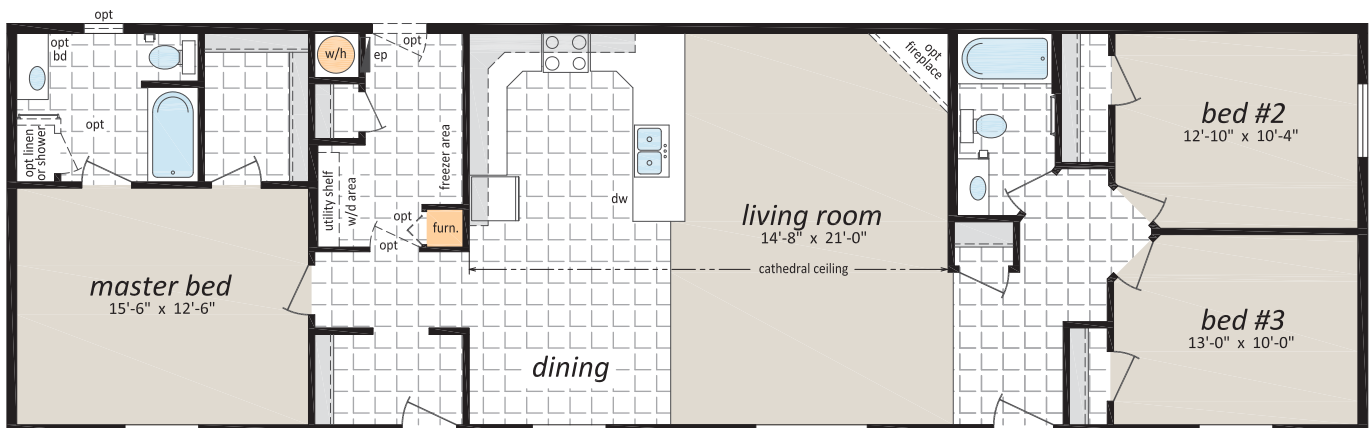
3 Beds, 2 Baths



ML-2

22' x 72' 1,584 sq. ft.

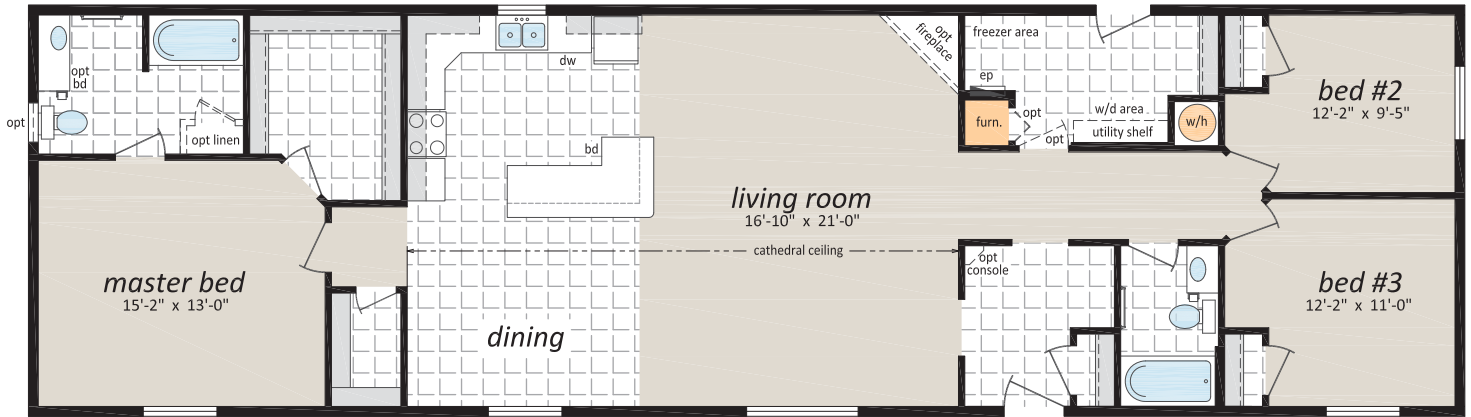
3 Beds, 2 Baths



ML-3

22' x 76' 1,672 sq. ft.

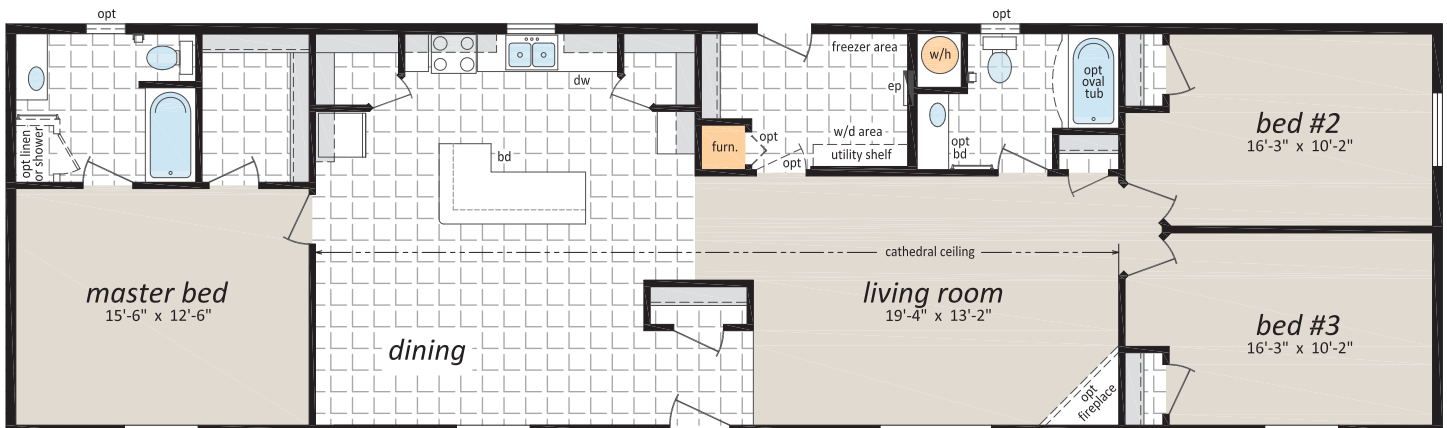
3 Beds, 2 Baths



ML-4

22' x 76' 1,672 sq. ft.

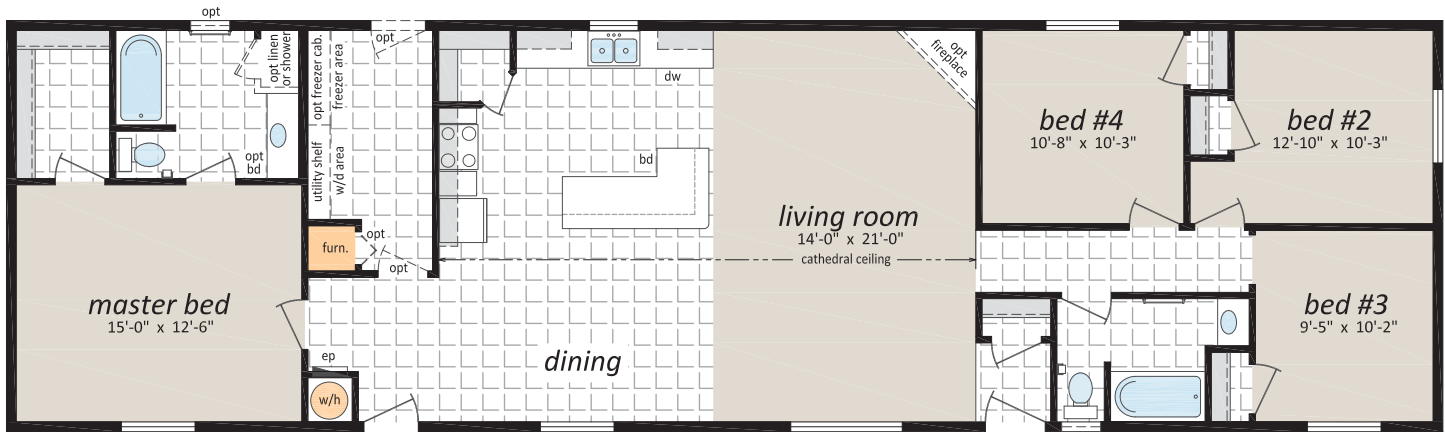
3 Beds, 2 Baths



ML-5

22' x 76' 1,672 sq. ft.

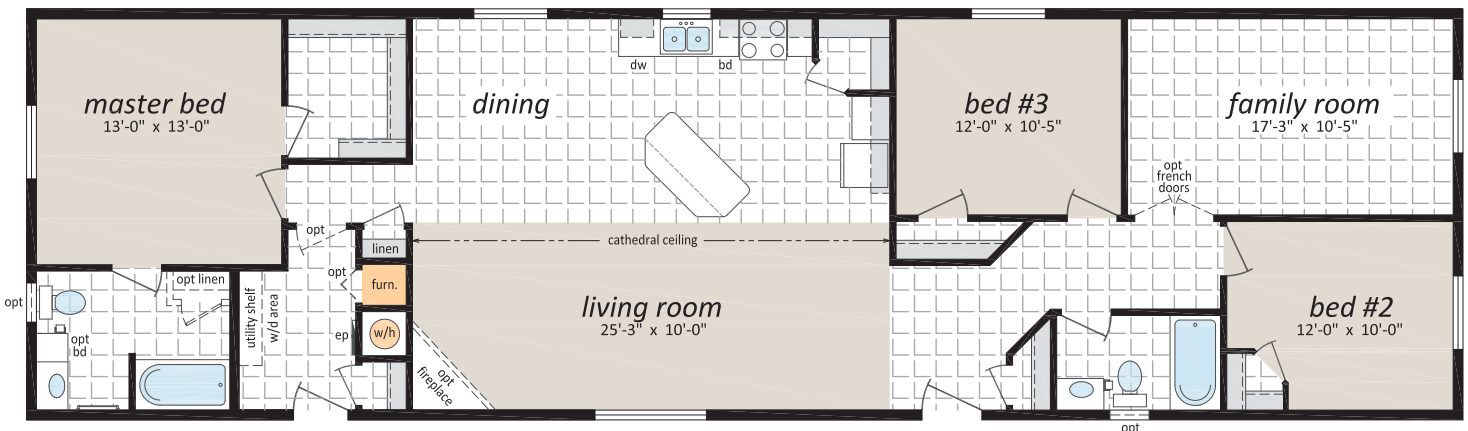
4 Beds, 2 Baths



ML-6

22' x 76' 1,672 sq. ft.

3 Beds, 2 Baths



ML-7

22' x 76' 1,672 sq. ft.

3 Beds, 2 Baths



DID YOU KNOW?

Shelter homes are built indoors, never exposed to the outdoor elements, and we continually inspect our homes to ensure our rigorous construction standards are met.

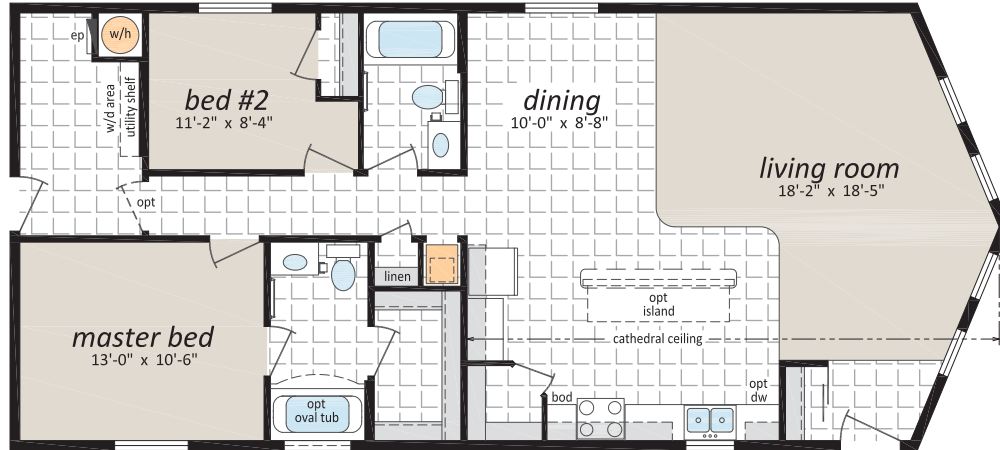
We use quality, brand-name building materials, fixtures and appliances in every home we build.



ML-241

24' x 53' 1,248 sq. ft.

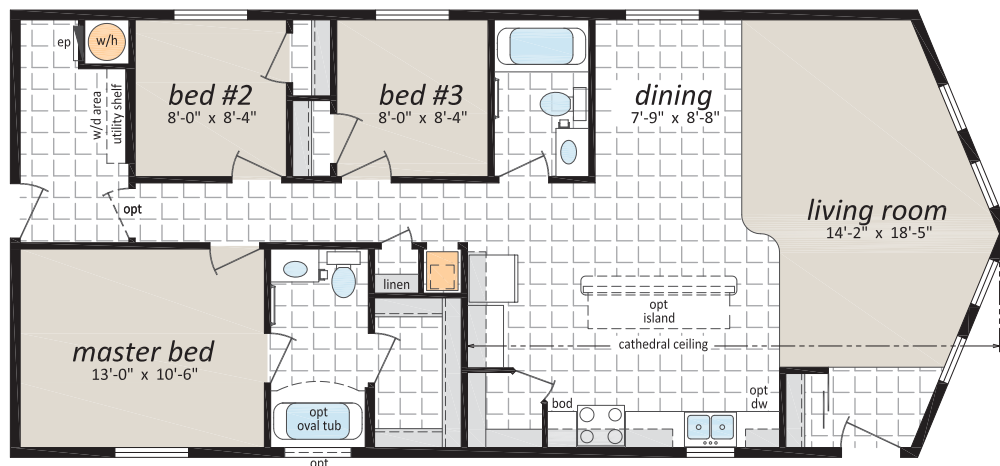
2 Beds, 2 Baths, Prow Front



ML-242

24' x 53' 1,248 sq. ft.

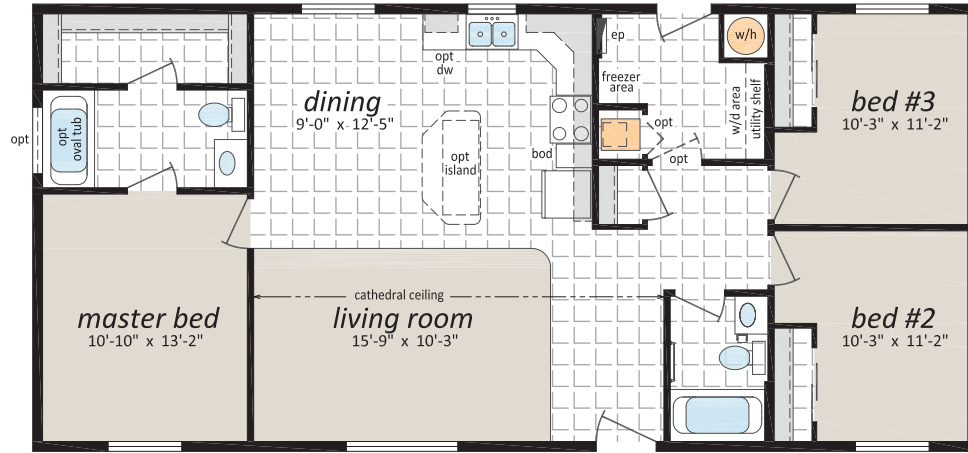
3 Beds, 2 Baths, Prow Front



ML-243

24' x 50' 1,200 sq. ft.

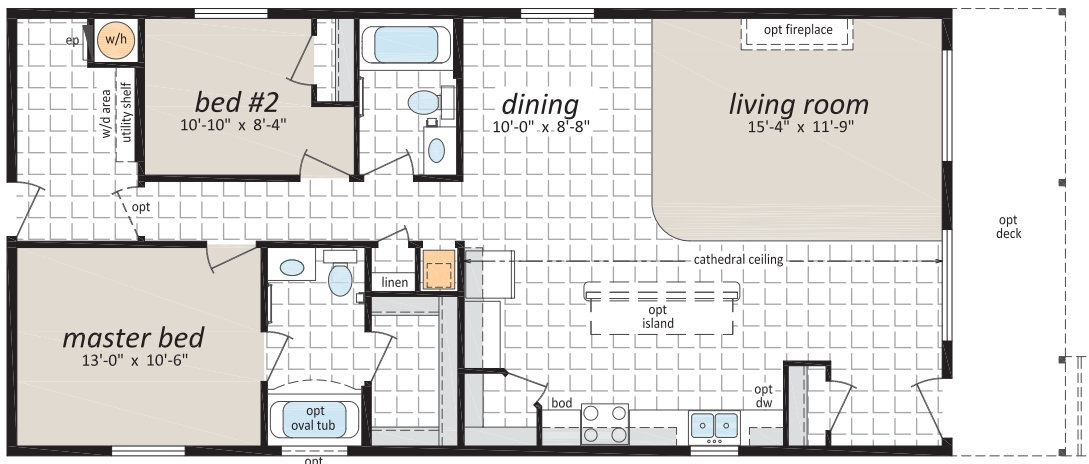
3 Beds, 2 Baths



ML-244

24' x 50' 1,200 sq. ft.

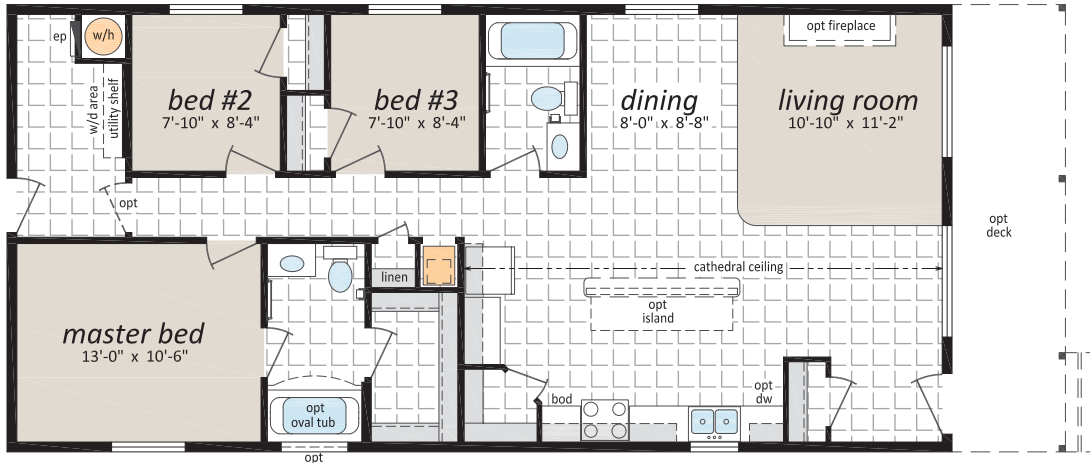
2 Beds, 2 Baths, Optional Porch



ML-245

24' x 50' 1,200 sq. ft.

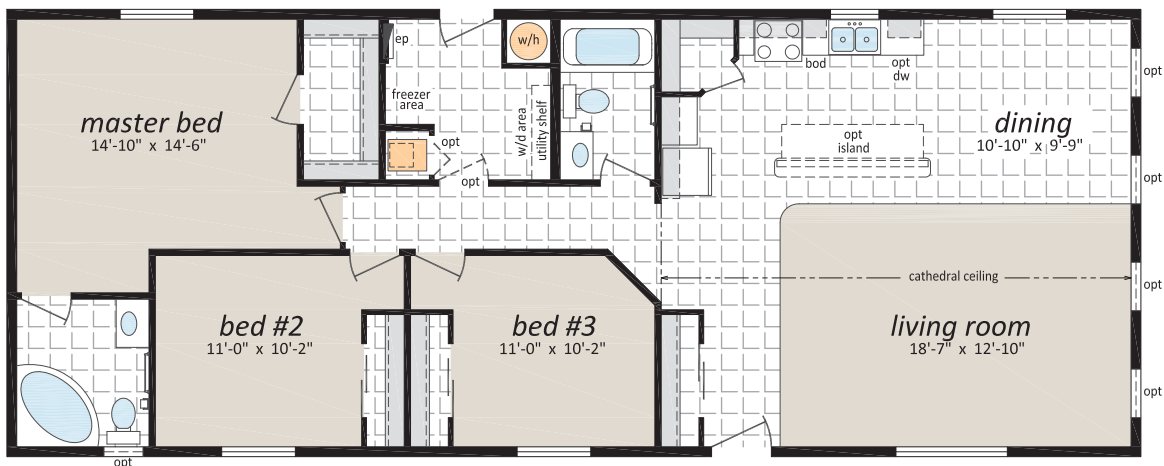
3 Beds, 2 Baths, Optional Porch



ML-246

24' x 60' 1,440 sq. ft.

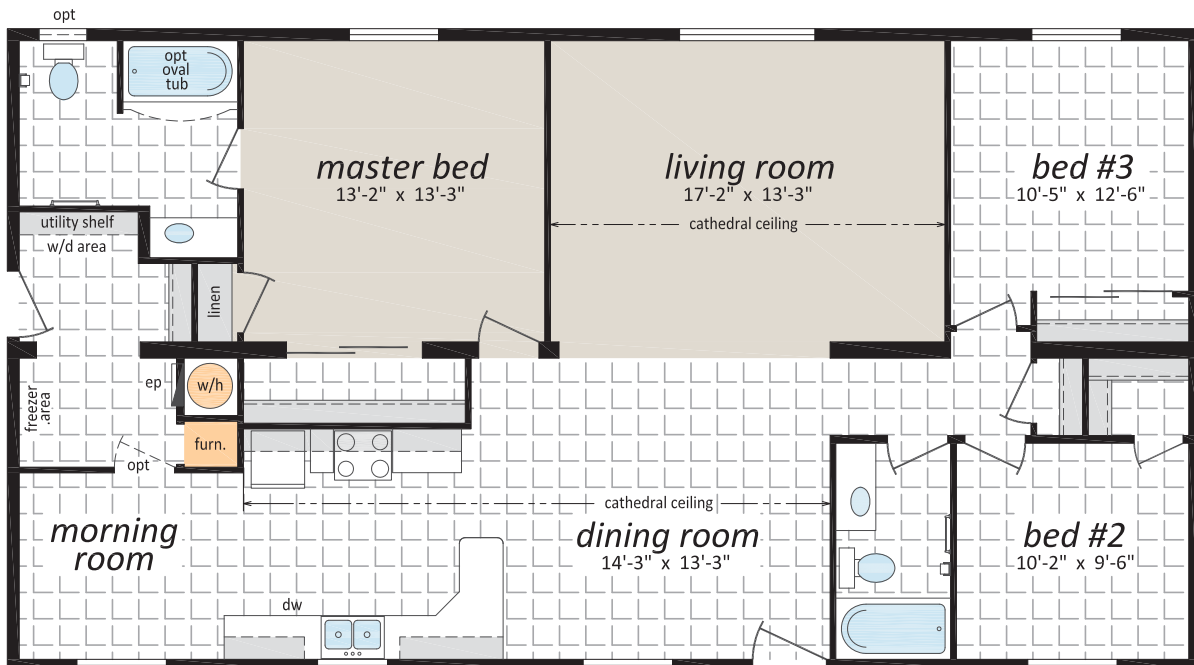
3 Beds, 2 Baths



ML-28621

28' x 52' 1,456 sq. ft.

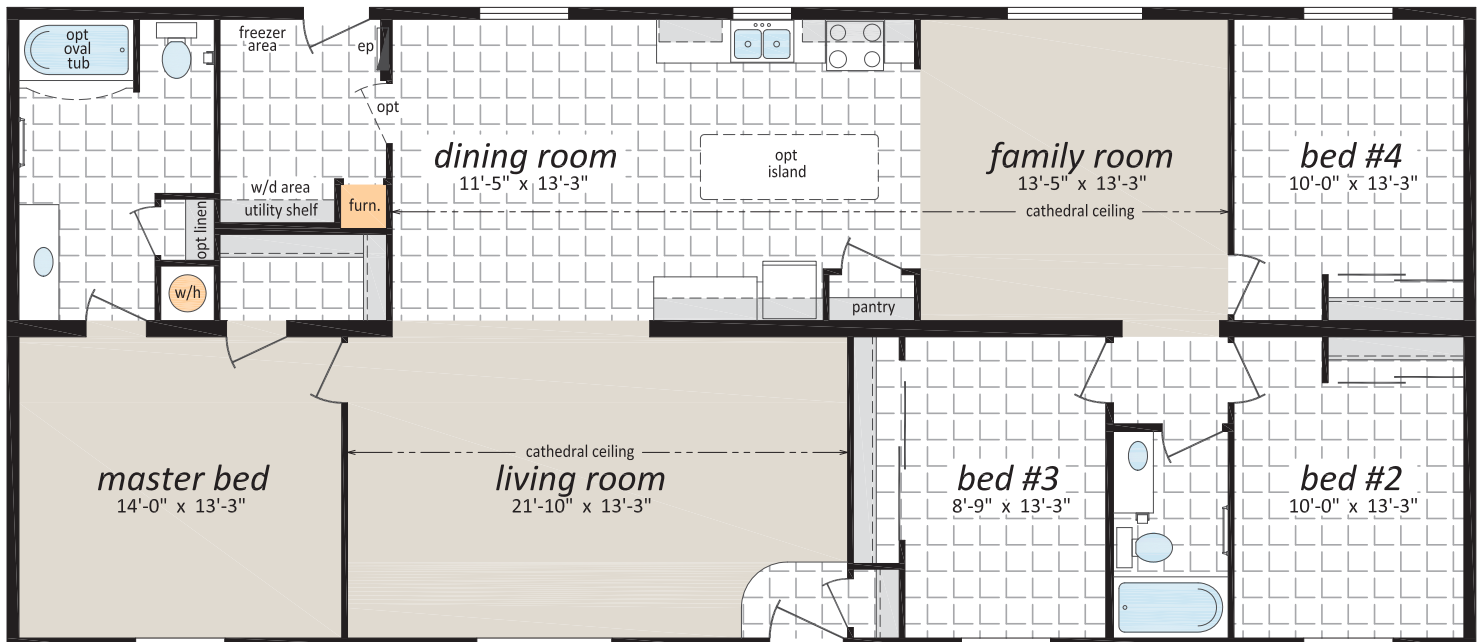
3 Beds, 2 Baths, Morning Room



ML-28641

28' x 52' 1,456 sq. ft.

4 Beds, 2 Baths, Family Room





**Mosaic Glass Tile Accent with
Full Ceramic Tile Backsplash**



**Stainless Steel Eye Level
Oven and Microwave**



Vessel Sink with 90 ° Faucet



Buffet and Hutch



Benton Style Interior Door



**White Ceramic "Farmer's Sink"
with Butcher Block Countertop**



Tiled Glass Shower

Optional Features

Exteriors

- ☐ Skylights
- ☐ Deluxe Garden Doors
- ☐ Patio Doors
- ☐ 9 Light Exterior Door
- ☐ Polyurethane Stone Accents
- ☐ Vinyl Shakes in Gable
- ☐ Octagon Windows
- ☐ Oval Exterior door w/vented sidelight
- ☐ "Panorama" Living Room Windows
c/w Diamond Cut Ceiling
- ☐ Sequoia Select Upgrade Vinyl Siding
- ☐ Turbine Vents
- ☐ Extra Exterior GFI
- ☐ High Snow Load

Interiors

- ☐ Painted Drywall Throughout Home
- ☐ Cathedral Ceiling in Master Bedroom
- ☐ Laminate Flooring
- ☐ Carpet in 2nd and 3rd Bedrooms
- ☐ French Doors
- ☐ Mirrored Closet Doors
- ☐ Freezer Cabinets
- ☐ Utility Room Door c/w Grill
- ☐ Ceiling Fan with Lights
- ☐ 2 - 4' Ceiling Mount or Recessed Fluorescent
Lights
- ☐ Decora Switch Package
- ☐ 2" PVC Blinds
- ☐ Programmable Thermostat
- ☐ Benton Style Doors

Bathroom

- ☐ Glass Mosaic Tile Backsplash
- ☐ Ceramic Tile Backsplash
- ☐ Jetted Oval Tub
- ☐ Jetted One Piece Tub and Shower
- ☐ 60" Shower c/w Glass Doors
- ☐ Accessible Toilet
- ☐ Grab Bars
- ☐ Full tiled shower w/sliding glass doors
- ☐ Vessel Vanity Sink w/ 90 degree Faucet

Kitchen

- ☐ Raised Panel Solid Wood Cabinet Doors
- ☐ European Stainless Steel Rangehood
- ☐ Etched Glass Cabinet Doors
- ☐ China Cabinets and Hatches
- ☐ Under Cabinet Lighting
- ☐ Upgrade High Definition Laminate Countertops
- ☐ Ceramic Tile Backsplash
- ☐ Glass Mosaic Tile Backsplash
- ☐ Tip Out Soap Tray Below Kitchen Sink
- ☐ 4 Bulb Track Light c/w Dimmer Switch
- ☐ 24" Fluorescent Light Above Kitchen Sink
- ☐ Pot and Pan Drawers
- ☐ Combination Microwave and Rangehood
- ☐ Goose Neck Moen Faucet

Utilities

- ☐ Gas Fireplace complete with Air Circulating Fan
- ☐ Gas Water Heater
- ☐ Gas Furnace
- ☐ Oil Gun Furnace
- ☐ Self Cleaning Range
- ☐ Two Door Side By Side Refrigerator
- ☐ Handi-Hite Bottom Mount Refrigerator
- ☐ Stacking Washer and Dryer
- ☐ Front Load Washer and Dryer
- ☐ Central Vacuum System
- ☐ Roughed in for Central Vacuum
- ☐ Air Conditioner Ready Furnace
- ☐ 2 1/2 Ton Air Conditioner
- ☐ Extra Telephone Jacks
- ☐ Surge Protector
- ☐ Garage Ready Package

Check off your extras ...

... and we will take care of the rest!



The Mainline Home Series



Authorized Retailer:



P.O. Box 845 #200 Hwy 18 West
Estevan, SK S4A 2A7
www.shelterhomes.ca



This is not a fully detailed specification. SRI Homes reserves the right to change specifications, designs, materials and suppliers without notice and without incurring obligation. Information contained herein is from data available at the time of printing. Square footage and dimensions are approximate. Photos and renderings may show optional features.
February 2017